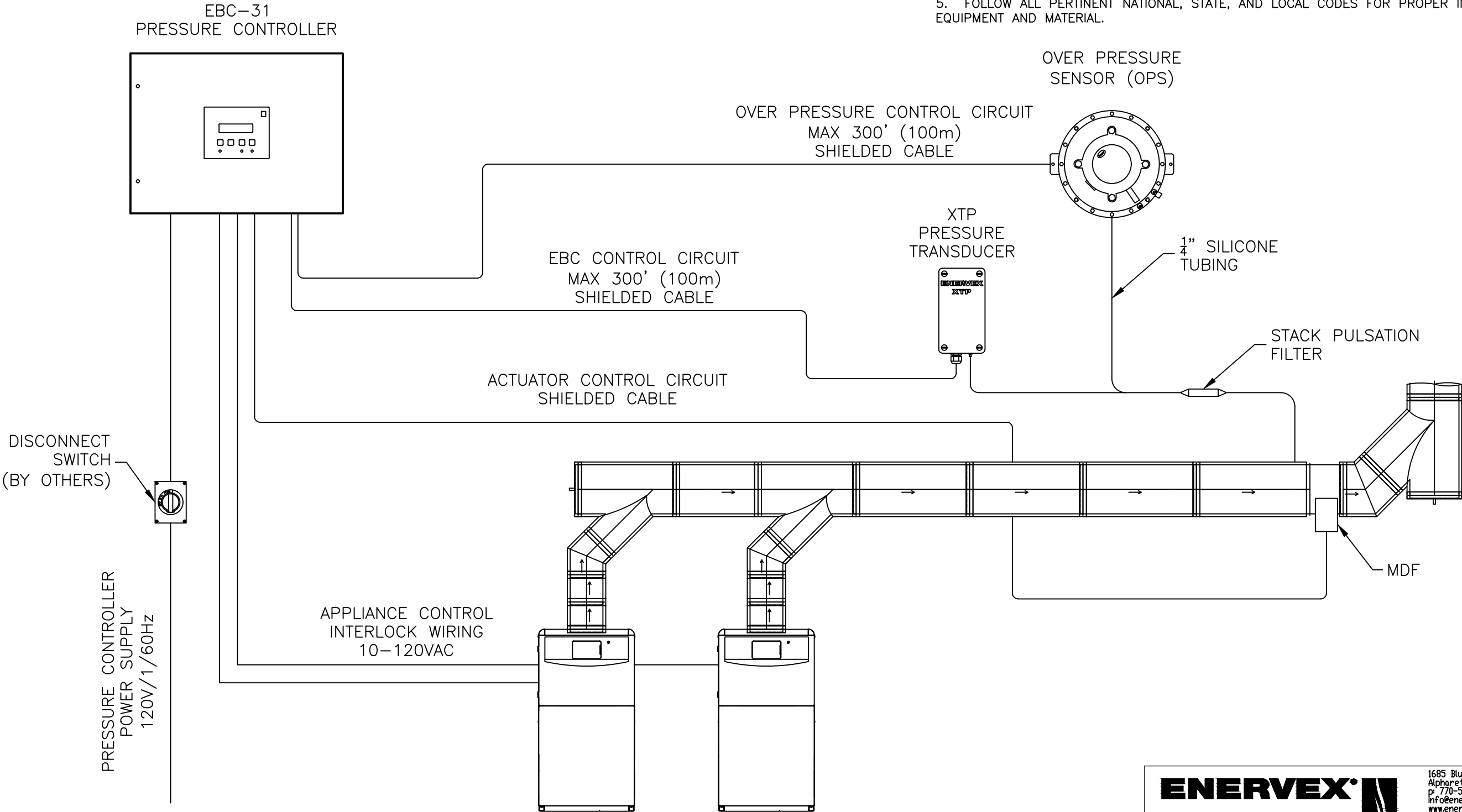


- DRAWING NOTES
1. WIRING INFORMATION IS SUITABLE FOR ENERVEX MODS APPLICATIONS. MODS AVAILABLE IN 4"–48" DIAMETER.
  2. STACK PROBE LOCATION IS JOB SPECIFIC; CONTACT ENERVEX, INC. AT 800–255–2923
  3. FOLLOW EQUIPMENT MANUFACTURER'S INSTRUCTIONS FOR PROPER INSTALLATION OF APPLIANCES.
  4. FOLLOW VENT MANUFACTURER'S RECOMMENDATIONS FOR CORRECT INSTALLATION METHODS.
  5. FOLLOW ALL PERTINENT NATIONAL, STATE, AND LOCAL CODES FOR PROPER INSTALLATION OF EQUIPMENT AND MATERIAL.



1685 Bluegrass Lakes Pkwy  
Alpharetta, GA 30004, USA  
p. 770-587-3238  
info@enervex.com  
www.enervex.com

INSTALLATION DETAIL FOR A  
MODS SYSTEM  
SINGLE PHASE 120V EBC-31

DIMENSIONAL TOLERANCES (UNLESS NOTED OTHERWISE)			
X	±1	FRACTION	1/16"
XX	±0.5	ANGLE	12°
XXX	±0.5	ROUNDNESS	0.5
SIZE	DRAWING NUMBER		REV
B			A